



JMP Consultants Limited
TRANSPORT PLANNERS & ENGINEERS



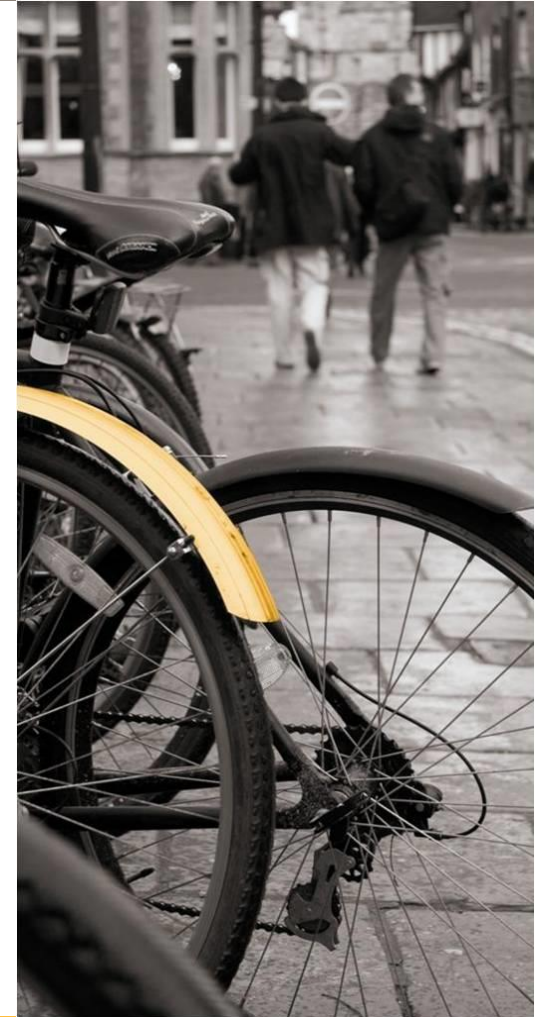
Who are JMP?

- Leading UK transport consultancy
- 11 offices across the UK
- 180 members of staff
- Annual turnover of £13 million
- Part of the Systra Group



What does JMP do?

- Traffic and Highways Engineering
- Civil, Structural & Water Engineering
- Development Management
- Development Planning
- Energy & Renewables
- Environmental Assessment
- Influencing Travel Behaviour
- Passenger Transport
- Transport Modelling
- Transport Policies and Plans
- Travel Planning & Business Travel



How did I get here?

QUALIFICATIONS

- 1999-2003 MEng Civil Engineering
- 2011-2013 HNC Countryside & Environmental Management
- 2015 CEng Chartered Engineer

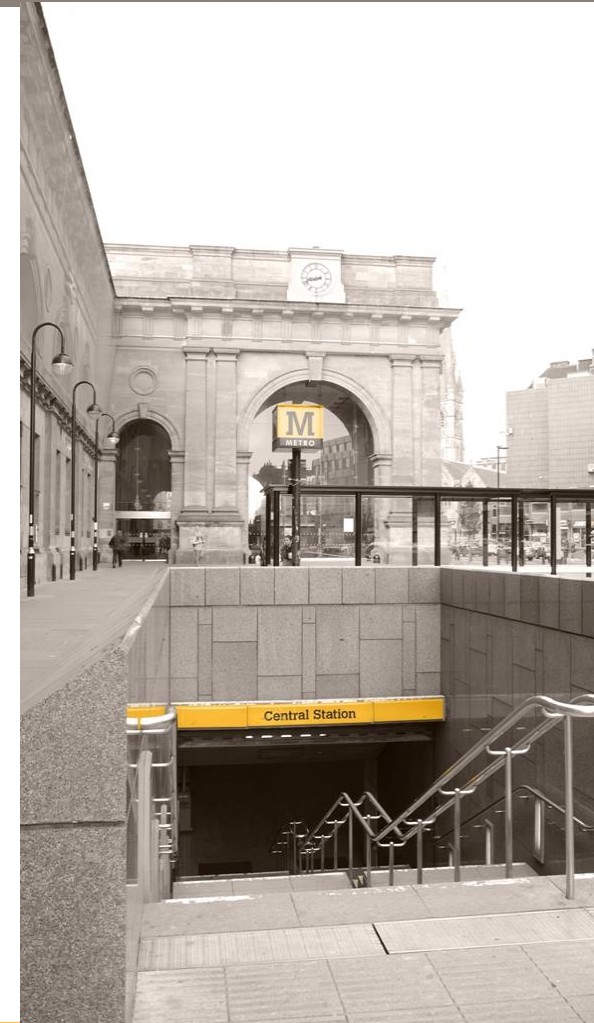
WORK EXPERIENCE

- 2003-2004 Graduate Structural Engineer Patrick Parsons Ltd
- 2005-2006 Assistant Traffic Engineer JMP
- 2006-2010 Traffic Engineer JMP
- 2010-2014 Senior Traffic Engineer JMP
- 2014- Principal Traffic Engineer JMP

Project examples

TRAFFIC / HIGHWAY ENGINEERING

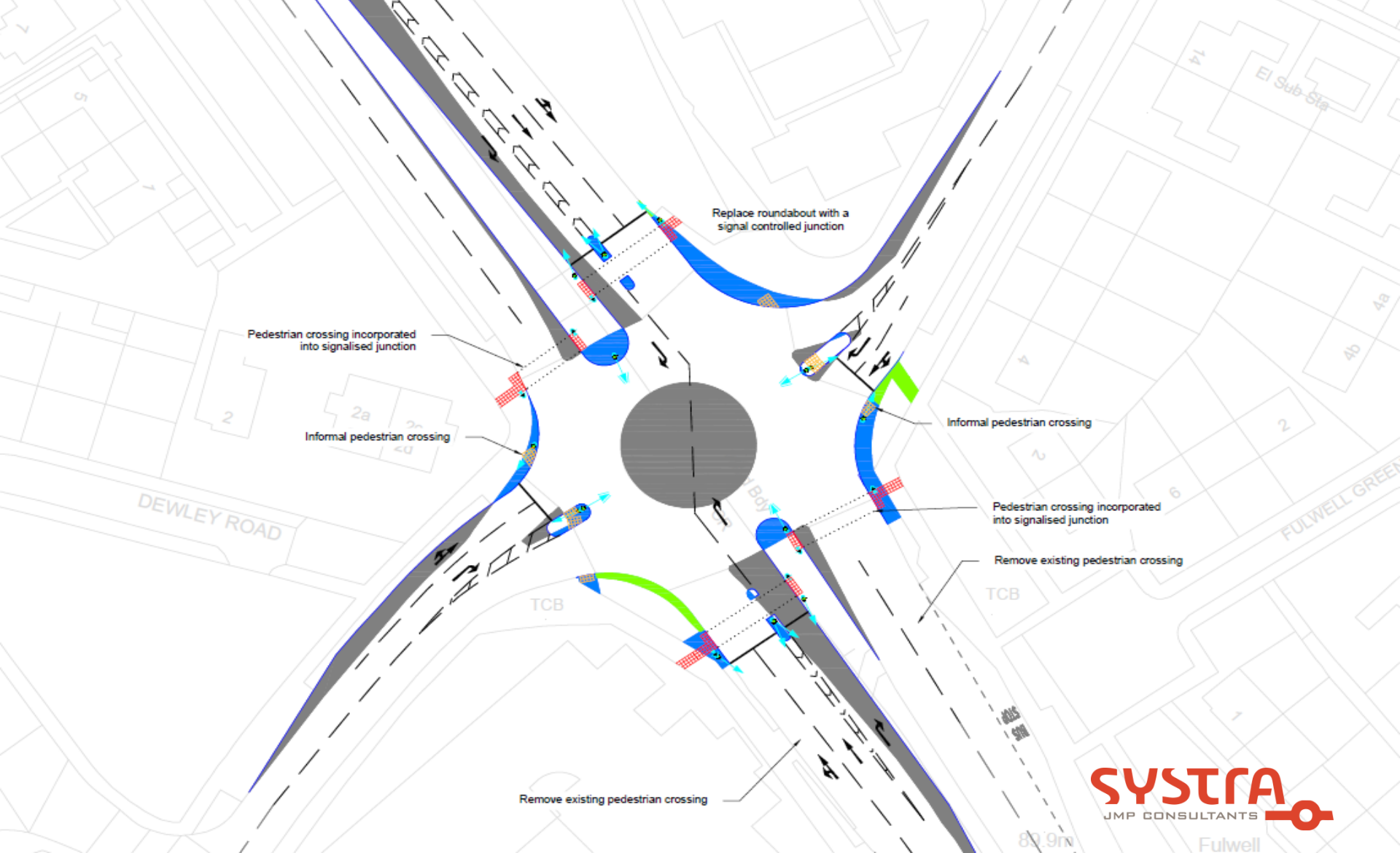
- Northern Land Release
- Carlisle Golf Club Right Turn Facility
- Moor Farm Roundabout



Client: Newcastle City Council

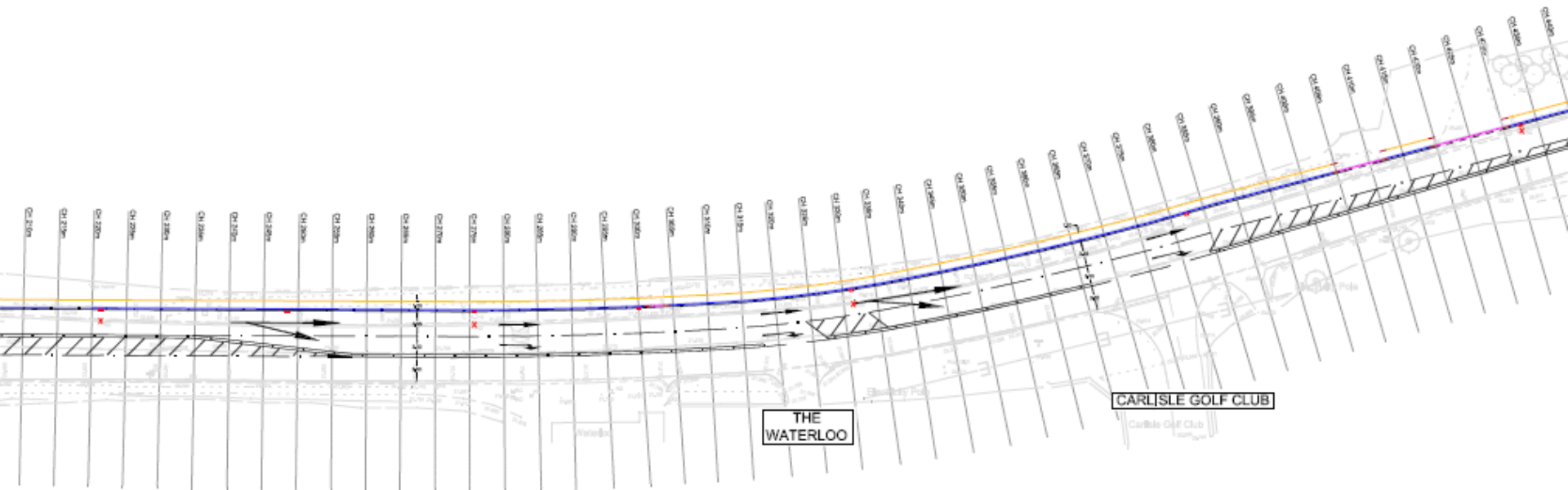
Project: Northern Land Release

JMP



Client: Road Link (A69) Ltd

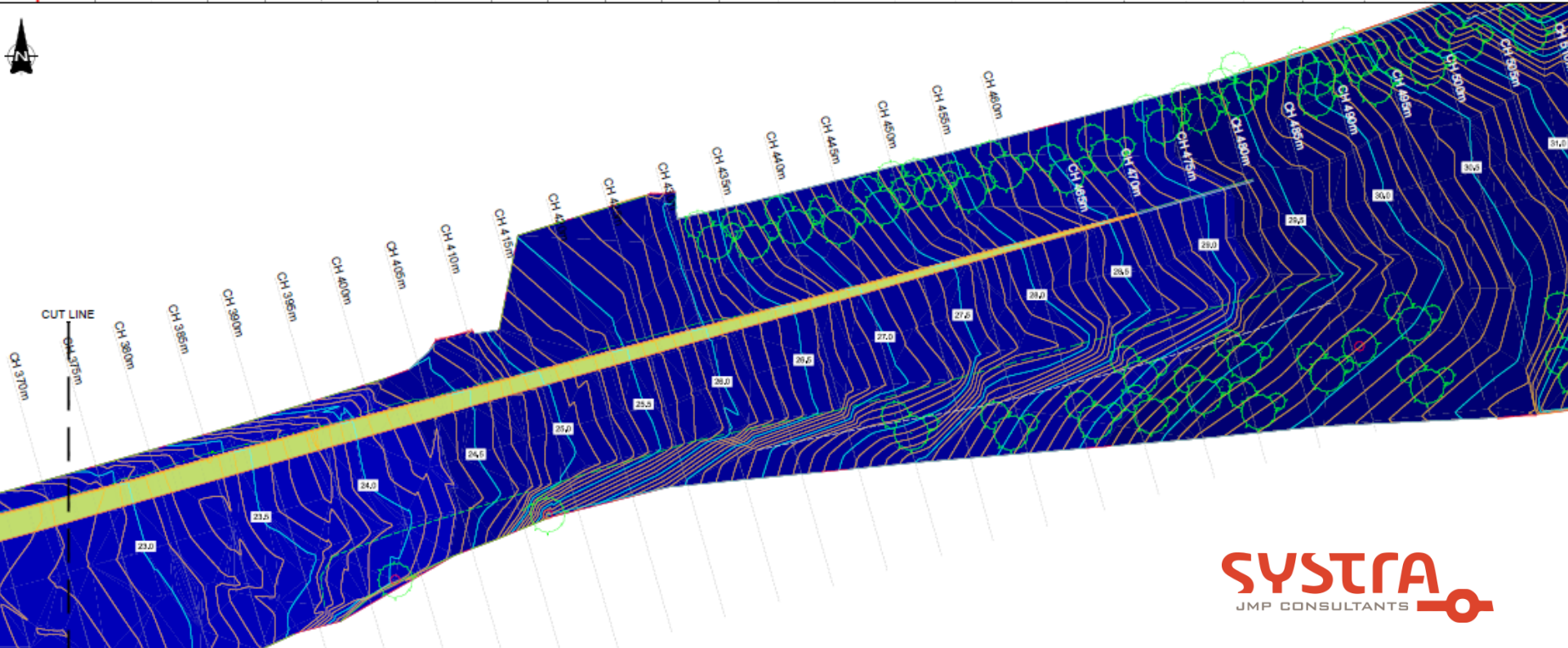
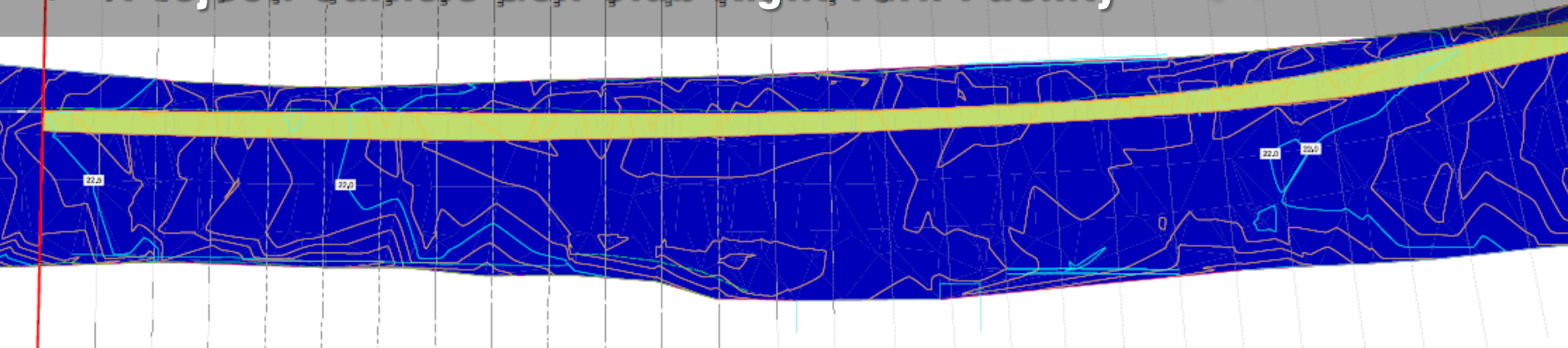
Project: Carlisle Golf Club Right Turn Facility



Chainages
2D design
due to absence of topographical survey

Client: Road Link (A69) Ltd

Project: Carlisle Golf Club Right Turn Facility



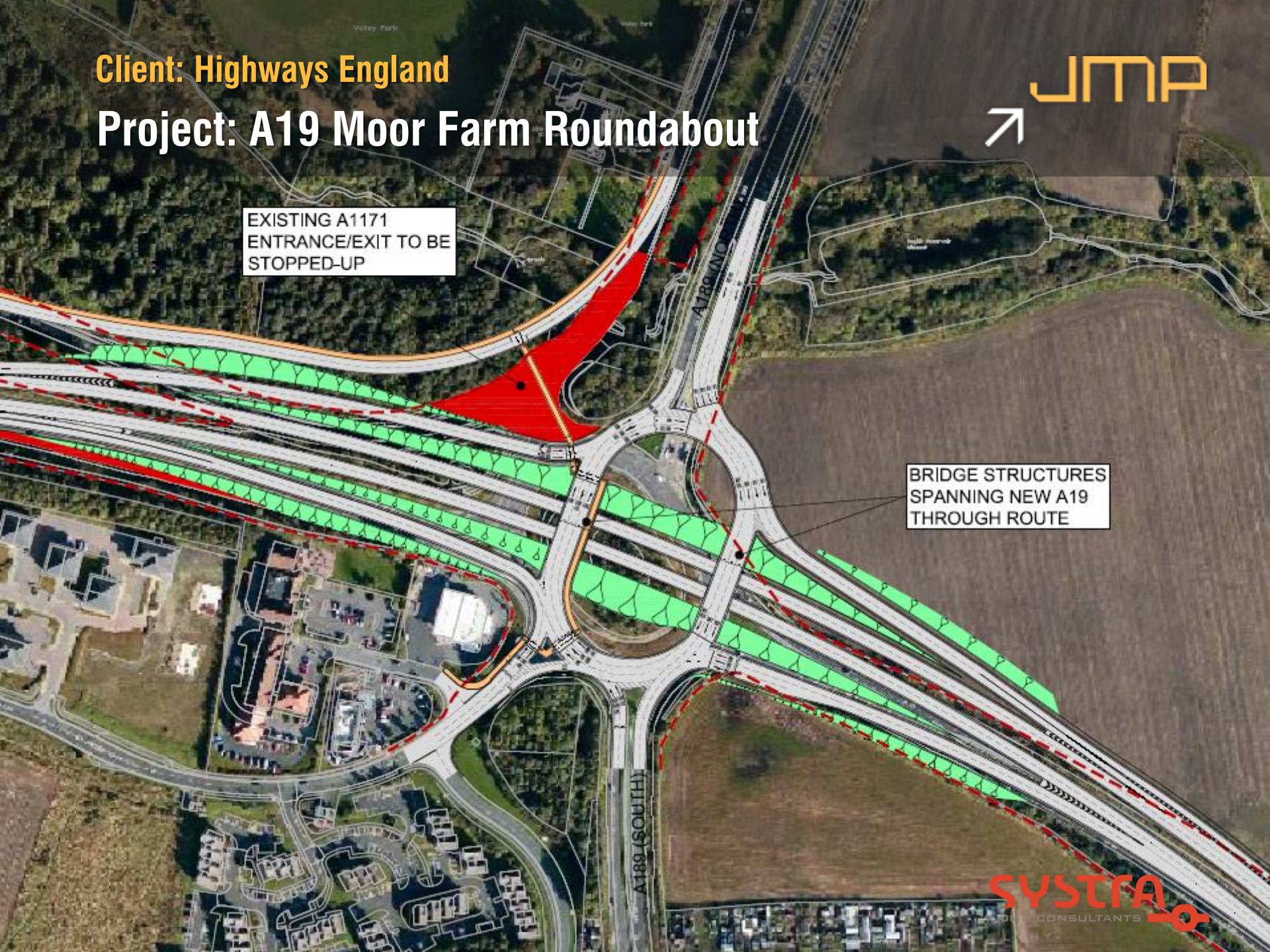
Client: Highways England

Project: A19 Moor Farm Roundabout



EXISTING A1171
ENTRANCE/EXIT TO BE
STOPPED-UP

BRIDGE STRUCTURES
SPANNING NEW A19
THROUGH ROUTE





Any Questions?

forwardthinking@jmp.co.uk
www.jmp.co.uk