

An aerial photograph of a town at sunset. The sky is filled with soft, golden light, and the town's buildings are illuminated from below. In the background, rolling hills are visible under a cloudy sky. A white graphic overlay, consisting of several curved lines, frames the central text.

# Connecting communities and tackling TRSE

# What is TRSE?

*"How much of my disposable income did the car take? Pretty much all of it. But even though I live in a dense area, the buses are poor ... I had to leave two hours by bus, twenty minutes by car".*

## **-- Poverty & financial stress**

*"I'm blind in one eye, and if I catch a bus I tend to fall on the step getting onto the bus, so I don't see my sister at Cross Hills. Taxis are too expensive to get there."*

## **-- Social isolation & loneliness**

# What is TRSE?

*"There's only one bus an hour and it didn't turn up – the children were cold and hungry, and we had no idea what was going to happen."*

## -- Stress & poor wellbeing

*"I booked a taxi but it didn't turn up and I missed the hospital appointment ... they put me right back at the beginning on the waiting list."*

## -- Poor health & limited access to key services

# TRSE risk across the regions of England

## North West

**1,266,000 (17.2%)**

## West Midlands

**966,000 (16.3%)**

## South West

**1,156,000 (20.6%)**

## North East

**842,000 (31.5%)**

## Yorkshire & The Humber

**1,199,000 (21.8%)**

## East Midlands

**1,101,000 (22.8%)**

## East of England

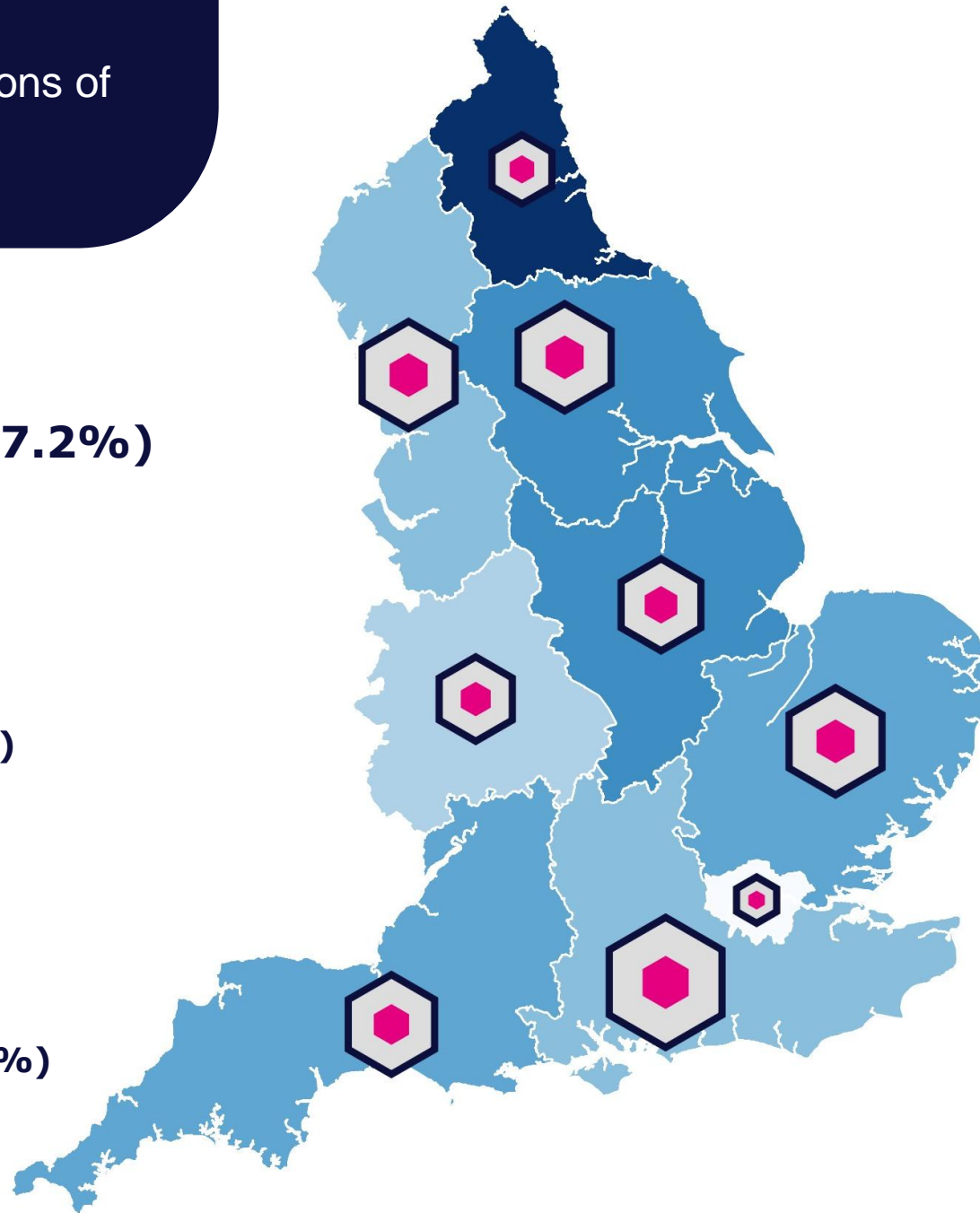
**1,238,000 (19.9%)**

## London

**567,000 (6.3%)**

## South East

**1,501,000 (16.3%)**



## TRSE risk in the North West

### Copeland: 62%

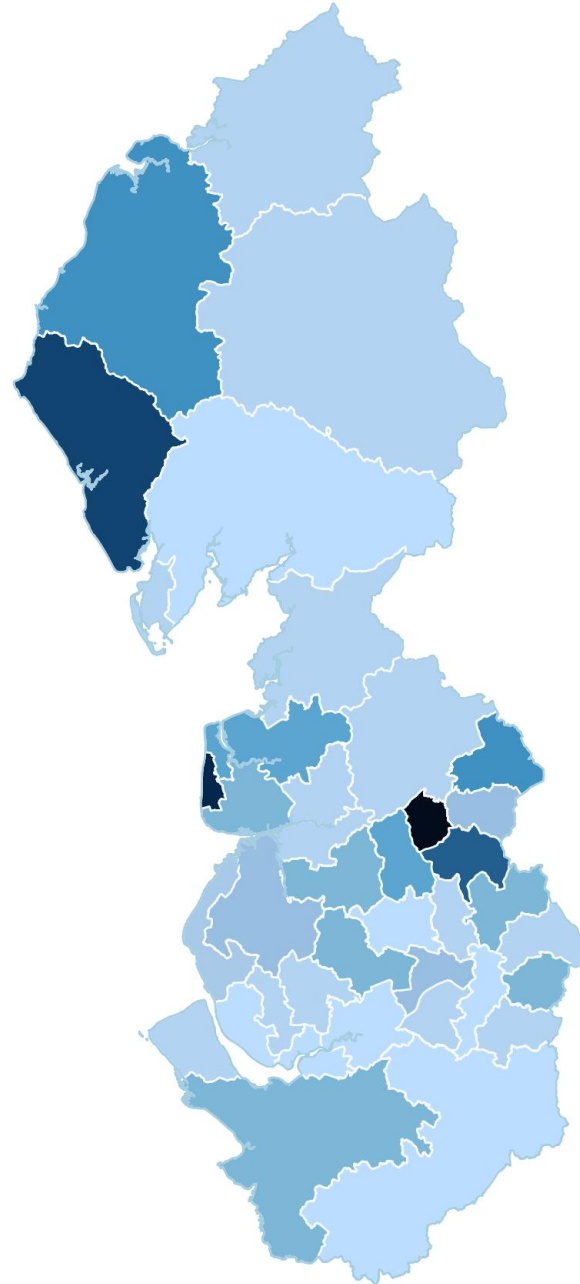
Whitehaven & Milton

Smaller coastal towns & rural-urban fringe communities

### Blackpool: 66%

Blackpool, Lytham & Fleetwood

Larger coastal town & surrounding communities



### Hyndburn: 74%

Accrington & Great Harwood

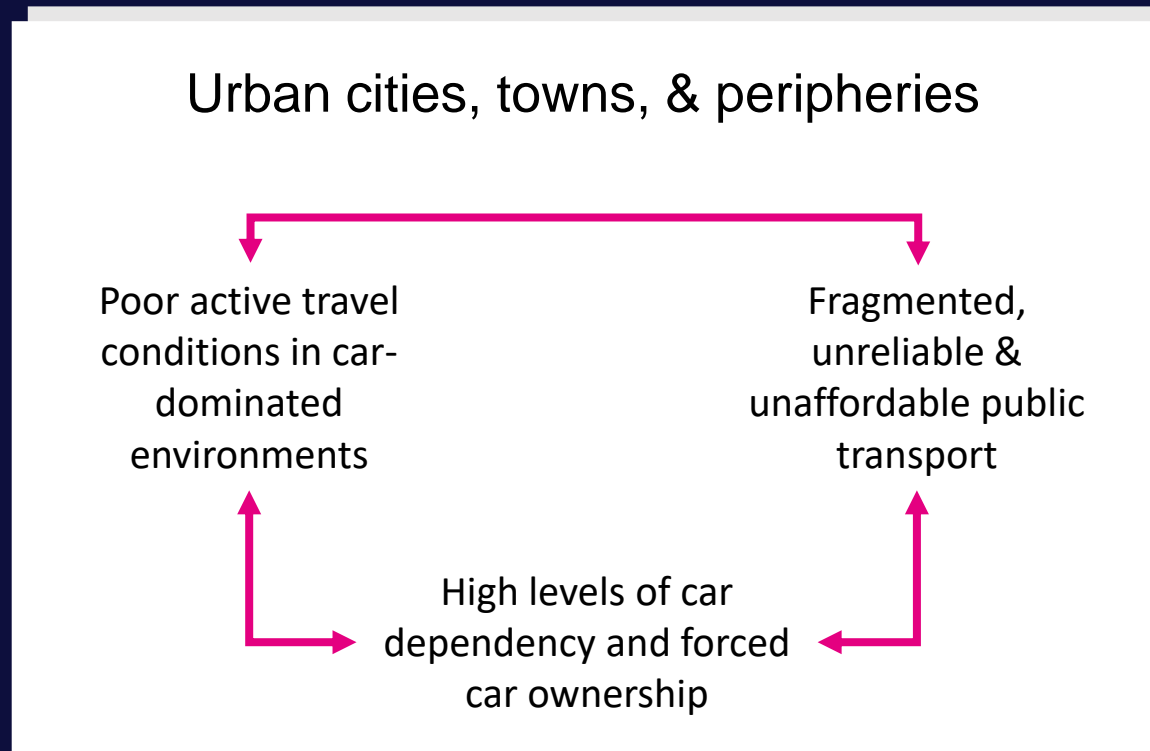
Small towns in rural settings

### Wigan: 30%

Leigh & Atherton

Communities on the periphery of major conurbations

# A vicious cycle of TRSE



**Leading to:**

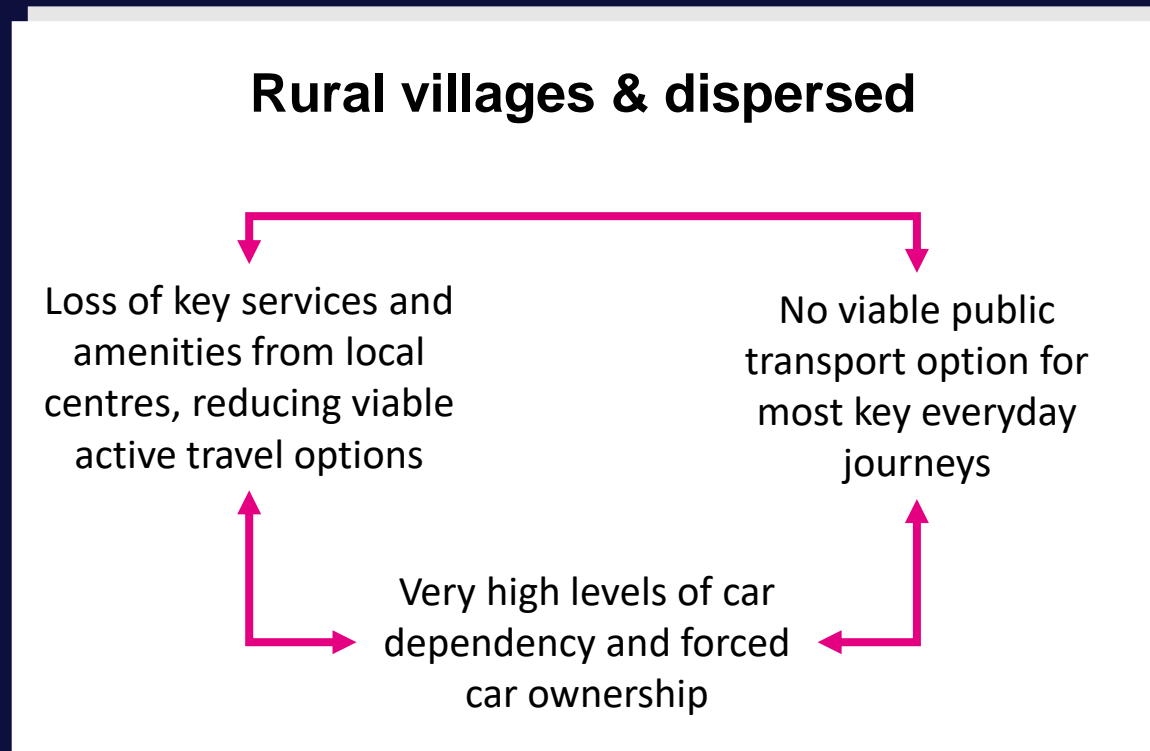
Limited or no access to key destinations  
Significant knock-on consequences  
Social exclusion and inequality



**Particularly for people with:**

Low incomes & insecure work  
Disabilities & long-term health conditions  
Caring & childcare responsibilities

# A vicious cycle of TRSE



**Leading to:**

Limited or no access to key destinations  
Significant knock-on consequences  
Social exclusion and inequality

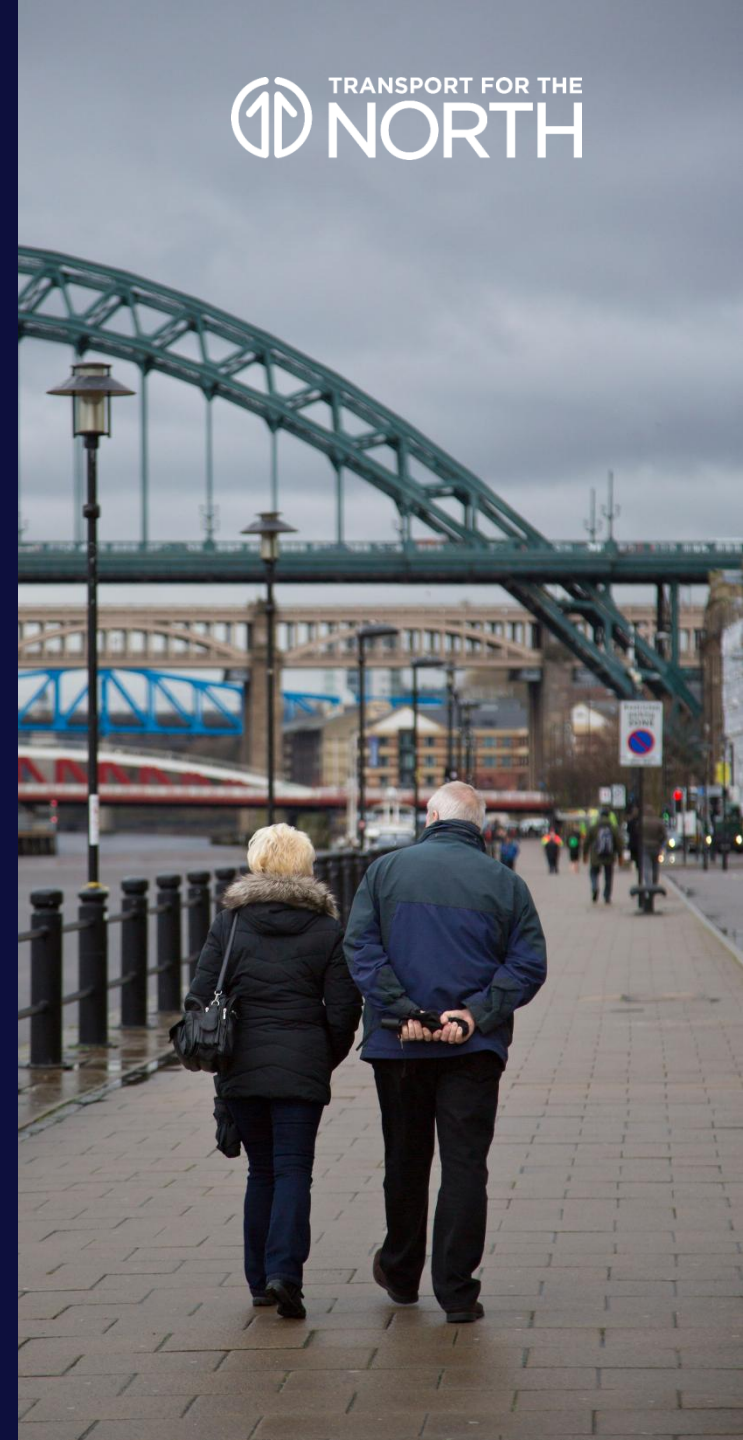


**Particularly for people with:**

Low incomes & insecure work  
Disabilities & long-term health conditions  
Caring & childcare responsibilities

# What steps can we take?

- Set a local vision for equality & TRSE
- Use that vision to prioritise and target
- Codesign solutions with communities
- Consult actively and interpret cautiously
- Monitor and evaluate impacts, and share widely
- Cooperate and advocate on broader challenges





# Populations framework

## Constraints

***Who faces greater constraints on their transport choices?***

Affordability, accessibility, access to information, location, time constraints, and safety concerns.

---

## Consequences

***Who faces greater consequences from transport issues?***

Risk of poverty, financial stress, poor health outcomes, and poor wellbeing.

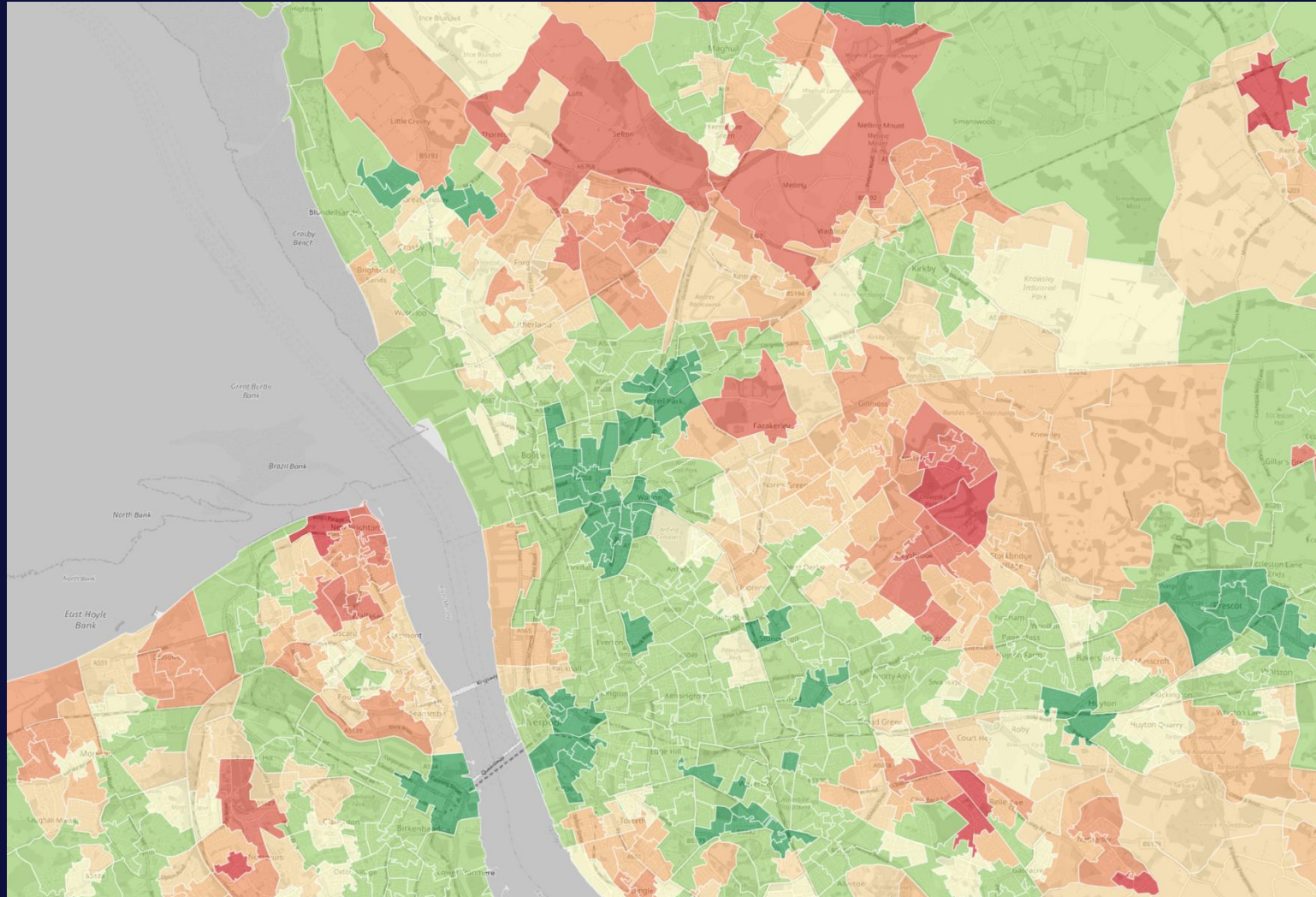
---

## Needs

***Who needs to travel in ways that exposes them to transport issues?***

Travel to peripheral locations, between neighbourhoods, and outside of peak times.

# The TRSE data tool



**Significantly below  
local average (<50%)**



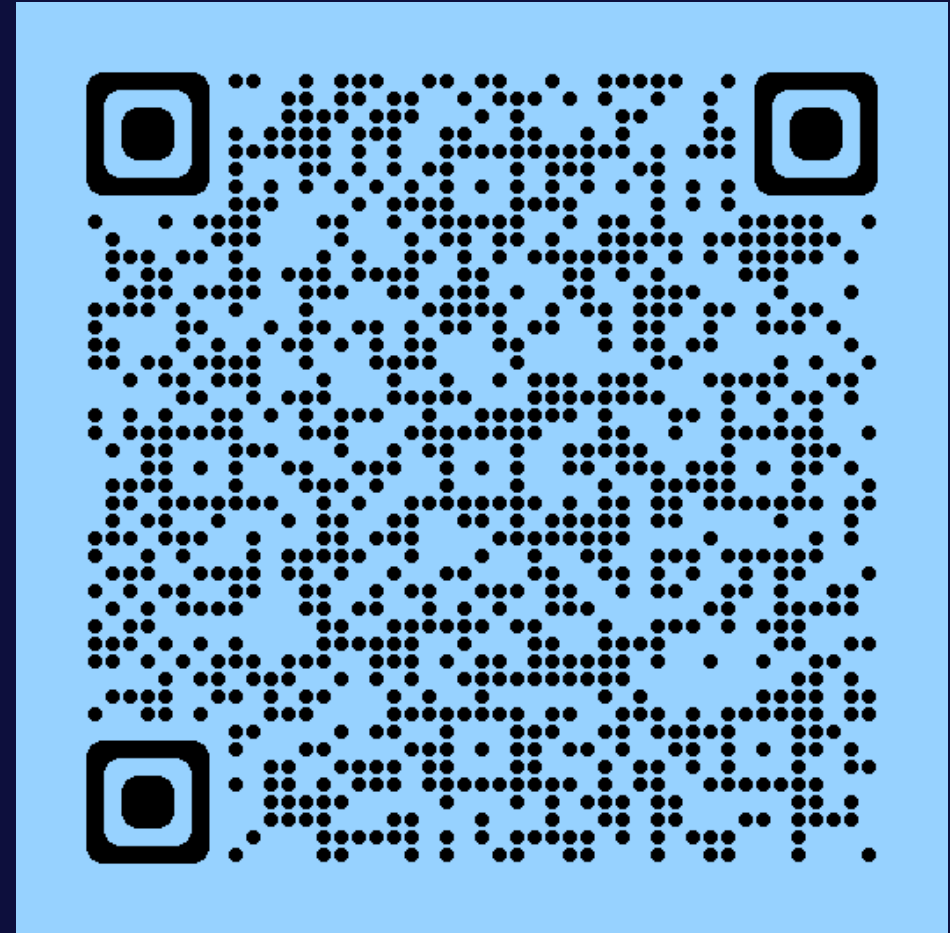
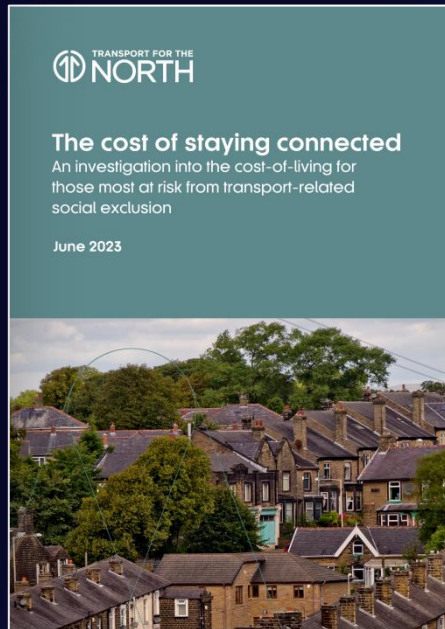
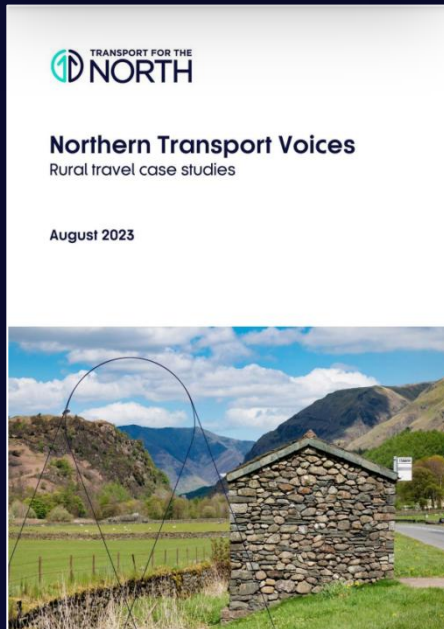
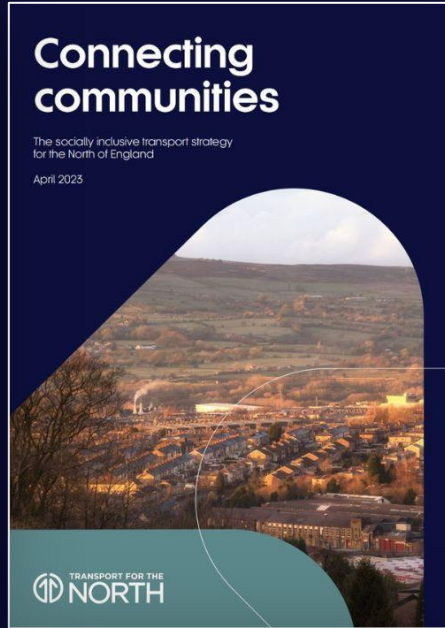
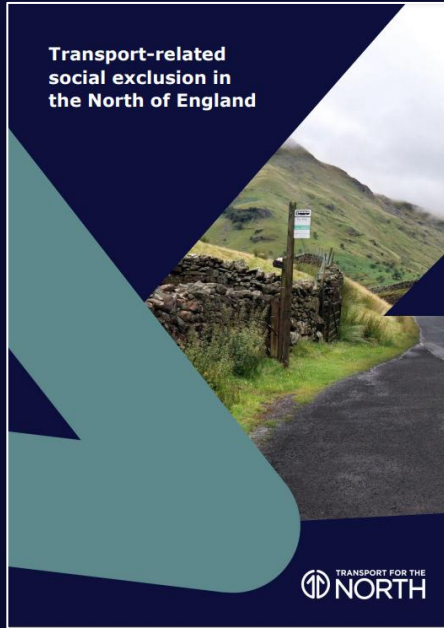
**Close to local average  
(+/- 5%)**



**Significantly above  
local average (>100%)**

# Why now?





[transportfornorth.com/social-inclusion](https://transportfornorth.com/social-inclusion)  
[research@transportfornorth.com](mailto:research@transportfornorth.com)